

CT-6382T/CT-6382TE

ADSL2/2+ WLAN VoIP IAD



Description

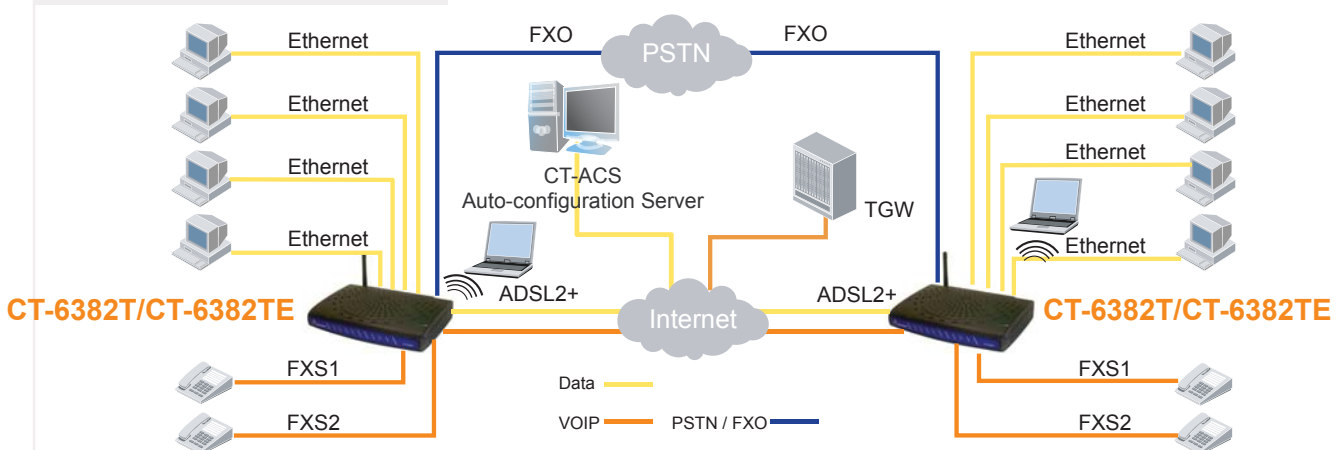
Comtrend's CT-6382T/CT-6382TE is a powerful WLAN VoIP IAD (Integrated Access Device), providing predictable, real-time, toll-quality voice over the Internet. Developed with ADSL2/2+ broadband technology over PSTN, the CT-6382T/CT-6382TE offers residential and business users easy access to the Internet via WLAN or Ethernet, also providing VoIP via standard analog telephones.

The CT-6382T/CT-6382TE allows calls to be routed to anywhere in the world – significantly reducing or eliminating long distance charges. You can even make phone calls when your PC is turned off. The CT-6382T/CT-6382TE supports policy based QoS on layer 3, which provides high quality voice service. It also provides a cost-effective solution to combine with all your network and telephony needs in one, which reduces space requirements and the cost of hardware and cabling. The CT-6382T/CT-6382TE is also designed with TR-068 compliant color panel and LED indicators making it more user friendly.

Features

- CT-6382T -- Annex A
- CT-6382TE -- Annex B
- ADSL2/2+ VoIP and Router integrated
- Integrated 802.11g AP(backward compatible with 802.11b)
- Supports life line: PSTN alive when power off
- Supports emergency call
- Supports QoS (Quality of Service) for voice
- Supports caller ID display and restriction
- Supports call hold
- Supports call waiting
- Supports call forwarding
- Supports call transfer
- Supports 3-way conference
- Supports direct number dialing
- Supports T.38
- Supports remote administration, automatic firmware upgrade and configuration
- Supports VPN Pass-through
- Supports Day-time parental control
- Supports TR-069/TR-098/TR-104/TR-111
- Supports TR-068

Applications Diagram



CT-6382T/CT-6382TE

ADSL2/2+ WLAN VoIP IAD



Specifications

Hardware Interface

FXSx2, FXOx1, RJ11x1 for ADSL2+, RJ-45 x4 for LAN, Reset Button x1, Power switch x1, USB host, (USB device)

WAN Interface

ADSL Standard

ITU-T G.992.5, ITU-T G.992.3, ITU-T G.992.1, ITU-T G.992.2, ANSI T1.413 Issue 2

G.992.3 (ADSL2)

Downstream: Up to 12 Mbps

Upstream: 1.3 Mbps

G.992.5 (ADSL2+)

Downstream: Up to 24 Mbps

Upstream: 1.3 Mbps

AnnexM

LAN Interface

Standard

IEEE 802.3, IEEE 802.3u

10/100 BaseT

Auto-sense

MDI/MDX support

Yes

WLAN Interface

Standard

IEEE802.11g, Backward compatible with 802.11b

Encryption

64, 128-bit Wired Equivalent Privacy (WEP) Data Encryption

Channels

11 Channels (US, Canada)/ 13 Channels (Europe)/ 14 Channels (Japan)

Data rate

Up to 54Mbps

MAC address filtering, WEP, WPA, IEEE 802.1x

10, 25, 50, 100mW @ 22MHz channel bandwidth output power level can be selected according to the environment

ATM Attributes

RFC 2364, RFC 2684 (RFC 1483) Bridge; RFC 2684 (RFC 1483) Route; RFC 2516; RFC 1577

VCs

8

AAL type

AAL5

ATM service class

UBR/CBR/VBR

ATM UNI support

UNI3.1/4.0

OAM F4/F5

Yes

Management

TR-069/ TR-098/ TR-104/ TR-111, SNMP, Telnet, Web-based management, Configuration backup and restoration

Software upgrade via HTTP, TFTP client and server, or FTP server

Bridge Functions

Transparent bridging and learning

IEEE 802.1d

IGMP proxy

Yes

IGMP snooping

Yes

Routing Functions

Static route, RIP, and RIP v1, v2, NAT/PAT, DHCP Client/Server/Relay, DNS, ARP

Security Functions

Authentication protocols

PAP, CHAP

VPN

PPTP/L2TP/IpSec pass-through

Stateful packet inspection, Packet filtering, Denial of service protection, Traffic conditioning, WFQ-based bandwidth

Management, HTTP proxy

QoS

L3 policy-based QoS, IP QoS, ToS

Voice Functions

SIP

RFC 3261

MGCP (optional)

RFC 3435

Codec

G.711, G.723.1, G.726, G.729ab

RTP

RFC 1889

SDP

RFC 2327

Caller ID

ETSI based

Life line/Emergency call

Yes

Echo cancellation

G.168

Silence suppression

Yes

Power

External power adapter

Input: AC100-240V, Output: DC15V / 1.6A

Environmental Conditions

Operating temperature

0 ~ 50 degrees Celsius

Relative humidity

5 ~ 95% (non-condensing)

Dimensions

205 mm (W) x 47 mm (H) x 145 mm (D)

Kit Weight (1*CT-6382T/TE, 1*RJ45 cable, 2*RJ11 cable, 1*power adapter, 1* CD-ROM)

0.96 KG

Specifications are subject to change without notice.

Taiwan:

3F-1, No. 10, Lane 609, Chung Hsin Road Section 5, San Chung, Taipei, Taiwan 24159

Tel: 886-2-2999-8261

Fax: 886-2-2999-8497

China:

Room 102, No. 8, Liling Garden, Yushan Town, Kunshan City, Jiangsu Province, China

Tel: 86-512-57383156, 86-512-57383157, 86-512-57384515

Fax: 86-512-57383155

UK:

566 Chiswick High Road Building 3, Chiswick Park Chiswick - London, W4 5YA UK

Tel: 44-0-8453701031

Fax: 44-0-8453701032

Spain:

Edif. América II C/Próncip, 7 portal 3 bajo H 28023 Madrid, Spain

Tel: 34-917990403

Fax: 34-913510999

France:

87, Rue du Gouverneur Général Félix Eboué 92130

Issy-les-Moulineaux, France

Tel: 33-1-70715700

Fax: 33-1-70715701

Czech Republic:

TOKOVO Jankovcova 1518/2, 170 00, Prague 7, Czech Republic

Tel: 420-266-782040

Fax: 420-266-782990

USA:

15375 Barranca Parkway, Suite C-104 Irvine, CA 92618, USA

Tel: 1-949-7539640

Fax: 1-949-7539020

Canada:

300-1275 West 6th Ave. Vancouver, BC V6H 1A6, Canada

Tel: 1-949-7539640

Fax: 1-949-7539020

Brazil:

Rua Vergueiro, 2087 cj. 101, 04101-000 Sao Paulo, SP - Brazil

Tel: 55-11-50878831



COMTREND CORPORATION

Global contact: sales@comtrend.com

Website: www.comtrend.com



DS_CT6382T/CT6382TE_R1.2_042208